



# DEVELOPMENT ACREAGE

+/- 5 acres in two tracts - Madison, AL



**GATEWAY**  
COMMERCIAL BROKERAGE



## CONTENTS

---

Executive Summary	<b>3</b>
Property Information	<b>4</b>
Location Information	<b>7</b>
Demographic Data	<b>14</b>
Traffic Data	<b>18</b>

## CONFIDENTIALITY & DISCLAIMER

---

All materials and information received or derived from Gateway Commercial Brokerage, Inc. its directors, officers, agents, advisors, affiliates and/or any third party sources are provided without representation or warranty as to completeness, veracity, or accuracy, condition of the property, compliance or lack of compliance with applicable governmental requirements, developability or suitability, financial performance of the property, projected financial performance of the property for any party's intended use or any and all other matters.

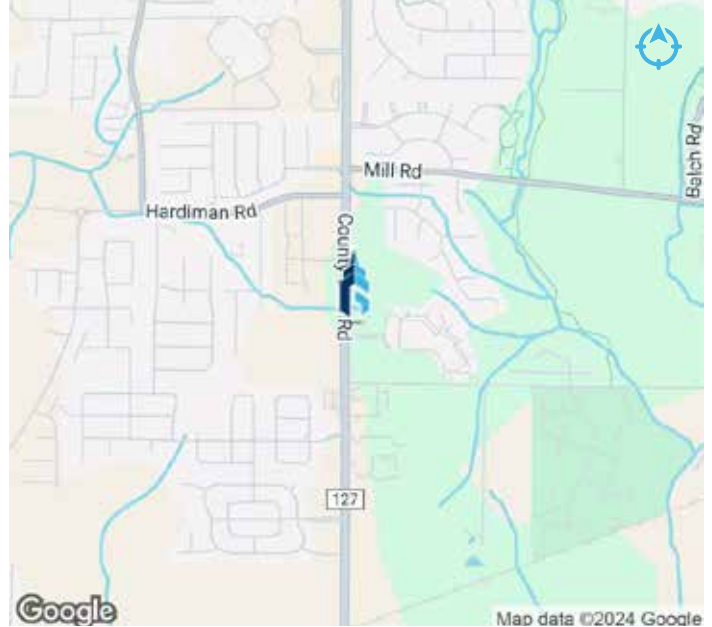
Neither Gateway Commercial Brokerage, Inc. its directors, officers, agents, advisors, or affiliates makes any representation or warranty, express or implied, as to accuracy or completeness of the any materials or information provided, derived, or received. Materials and information from any source, whether written or verbal, that may be furnished for review are not a substitute for a party's active conduct of its own due diligence to determine these and other matters of significance to such party. Gateway Commercial Brokerage, Inc. will not investigate or verify any such matters or conduct due diligence for a party unless otherwise agreed in writing.

EACH PARTY SHALL CONDUCT ITS OWN INDEPENDENT INVESTIGATION AND DUE DILIGENCE.

Any party contemplating or under contract or in escrow for a transaction is urged to verify all information and to conduct their own inspections and investigations including through appropriate third party independent professionals selected by such party. All financial data should be verified by the party including by obtaining and reading applicable documents and reports and consulting appropriate independent professionals. Gateway Commercial Brokerage, Inc. makes no warranties and/or representations regarding the veracity, completeness, or relevance of any financial data or assumptions. Gateway Commercial Brokerage, Inc. does not serve as a financial advisor to any party regarding any proposed transaction. All data and assumptions regarding financial performance, including that used for financial modeling purposes, may differ from actual data or performance. Any estimates of market rents and/or projected rents that may be provided to a party do not necessarily mean that rents can be established at or increased to that level. Parties must evaluate any applicable contractual and governmental limitations as well as market conditions, vacancy factors and other issues in order to determine rents from or for the property.

Legal questions should be discussed by the party with an attorney. Tax questions should be discussed by the party with a certified public accountant or tax attorney. Title questions should be discussed by the party with a title officer or attorney. Questions regarding the condition of the property and whether the property complies with applicable governmental requirements should be discussed by the party with appropriate engineers, architects, contractors, other consultants and governmental agencies. All properties and services are marketed by Gateway Commercial Brokerage, Inc. in compliance with all applicable fair housing and equal opportunity laws.

# EXECUTIVE SUMMARY



OFFERING SUMMARY	
# of Parcels:	2
Lot Sizes:	+/- 2.46 and +/- 2.5 Acres
Price:	Call for pricing
Zoning:	B3
Best Use:	Development
Market:	Madison
Submarket:	Huntsville

## PROPERTY OVERVIEW

Gateway is proud to present an exceptional opportunity with this two-parcel offering, comprising approximately 5 acres of prime land along the high-traffic County Line Road. Zoned B3, this property provides excellent frontage and visibility, making it an ideal location for commercial development. The parcels are conveniently located near Greenbrier Parkway, offering easy access to the rapidly growing industrial hub that includes major corporations like Amazon, Target, and Polaris.

The two parcels are separated by Continental Drive, which provides access to Somerset at Madison Apartments. All necessary utilities are available, and the property is not located within a flood zone, adding to its appeal for development.

This centrally located property offers convenient access to Decatur, Athens, and Huntsville, ensuring high potential for business growth. All written offers will be reviewed and considered.



DEVELOPMENT ACREAGE

# PROPERTY INFORMATION

County Line Road - Madison, AL



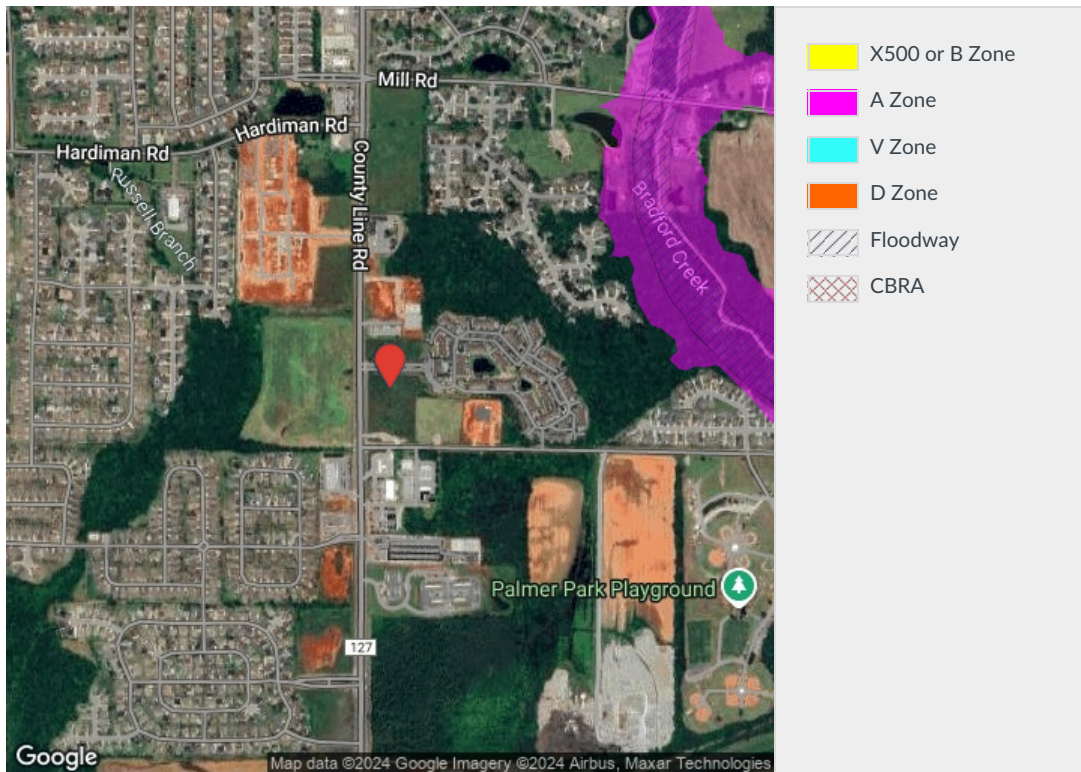
813 PALMER RD MADISON, AL 35758-1769

LOCATION ACCURACY: *User-defined location*

## Flood Zone Determination Report

Flood Zone Determination: **OUT**

COMMUNITY	010308	PANEL	0283G
PANEL DATE	August 16, 2018	MAP NUMBER	01089C0283G



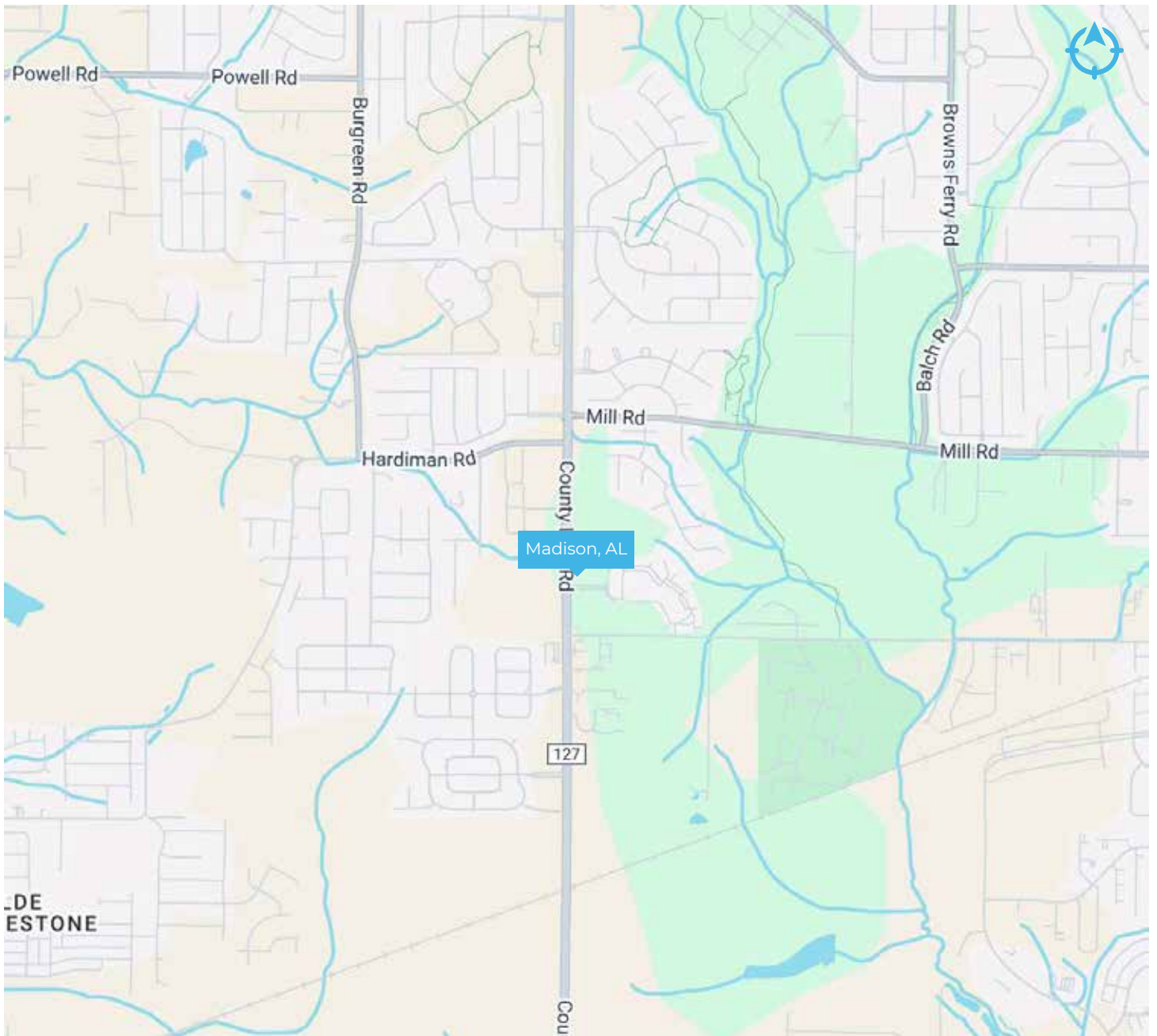


DEVELOPMENT ACREAGE

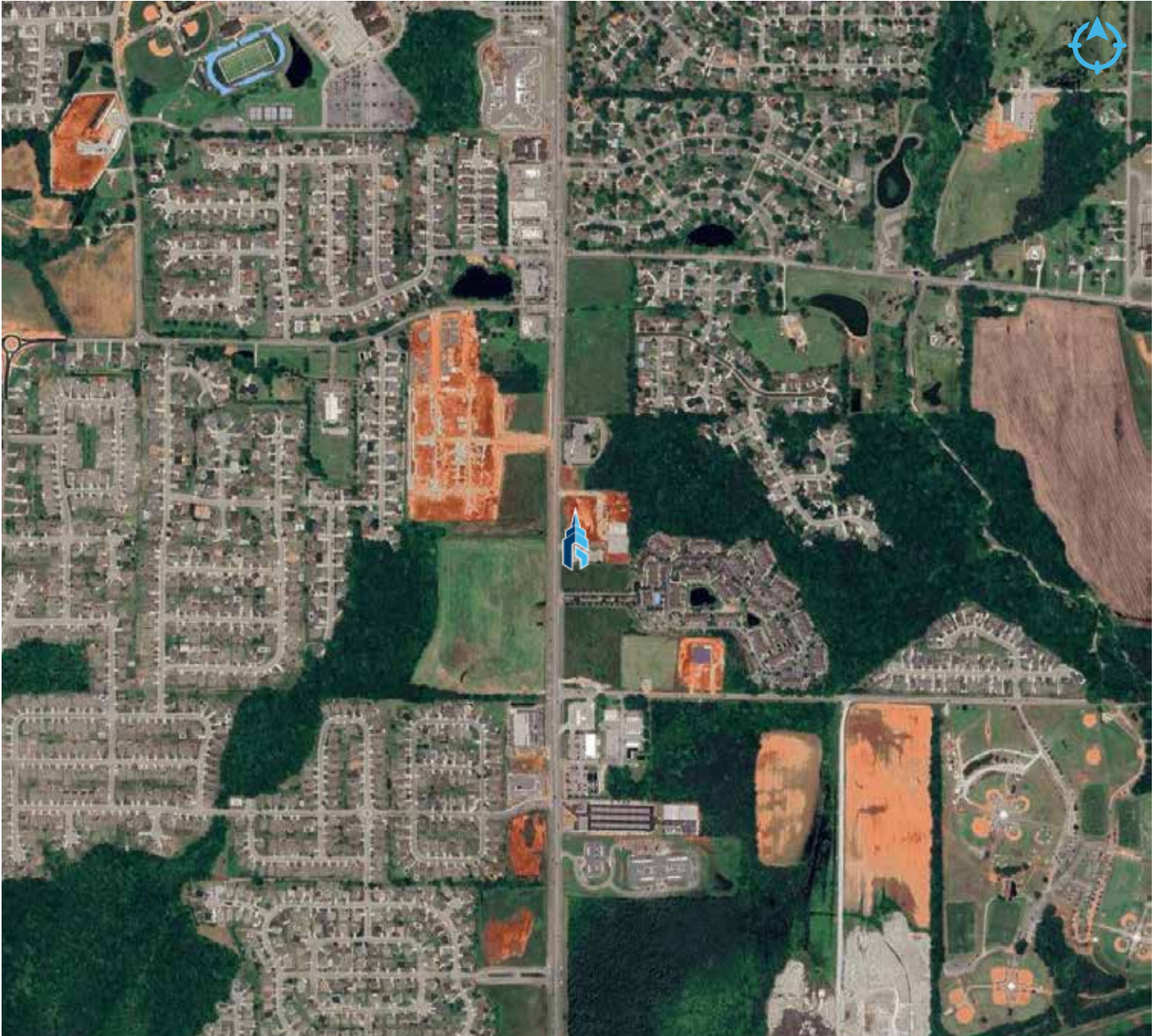
# LOCATION INFORMATION

County Line Road - Madison, AL

DEVELOPMENT ACREAGE  
**REGIONAL MAP**

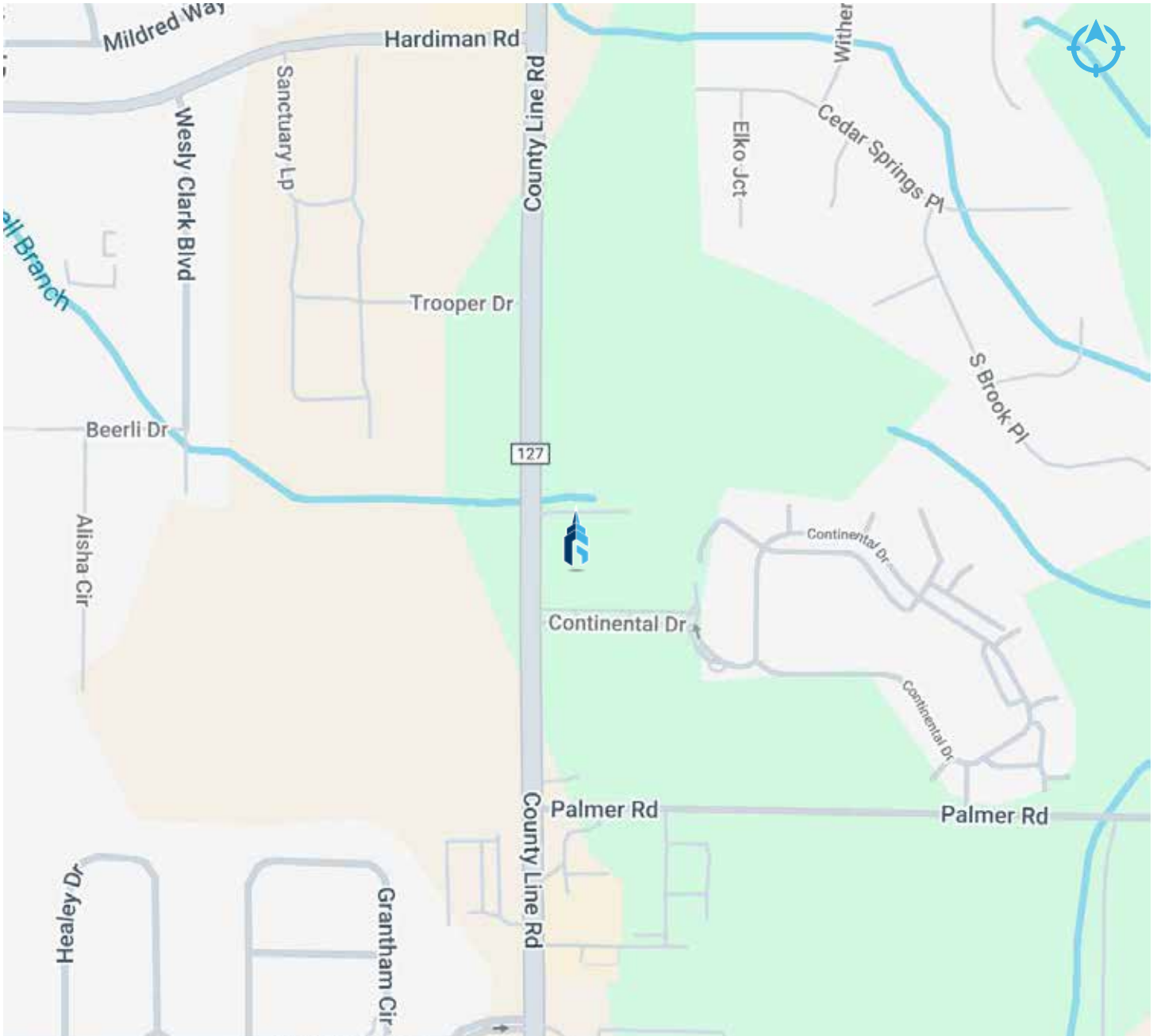


# AERIAL MAP





DEVELOPMENT ACREAGE  
**LOCATION MAP**



# PROXIMITY TO POINTS OF INTEREST



LOCATION	DISTANCE	TRAVEL TIME
Interstate 565	+/- 2.3 miles	+/- 4 minutes
Interstate 65	+/- 9.4 miles	+/- 10 minutes
Athens	+/- 15.9 miles	+/- 26 minutes
Decatur	+/- 14.8 miles	+/- 17 minutes
Huntsville	+/- 15.7 miles	+/- 21 minutes
HSV International Airport	+/- 5.1 miles	+/- 8 minutes

DEVELOPMENT ACREAGE  
**PARCEL MAPS**



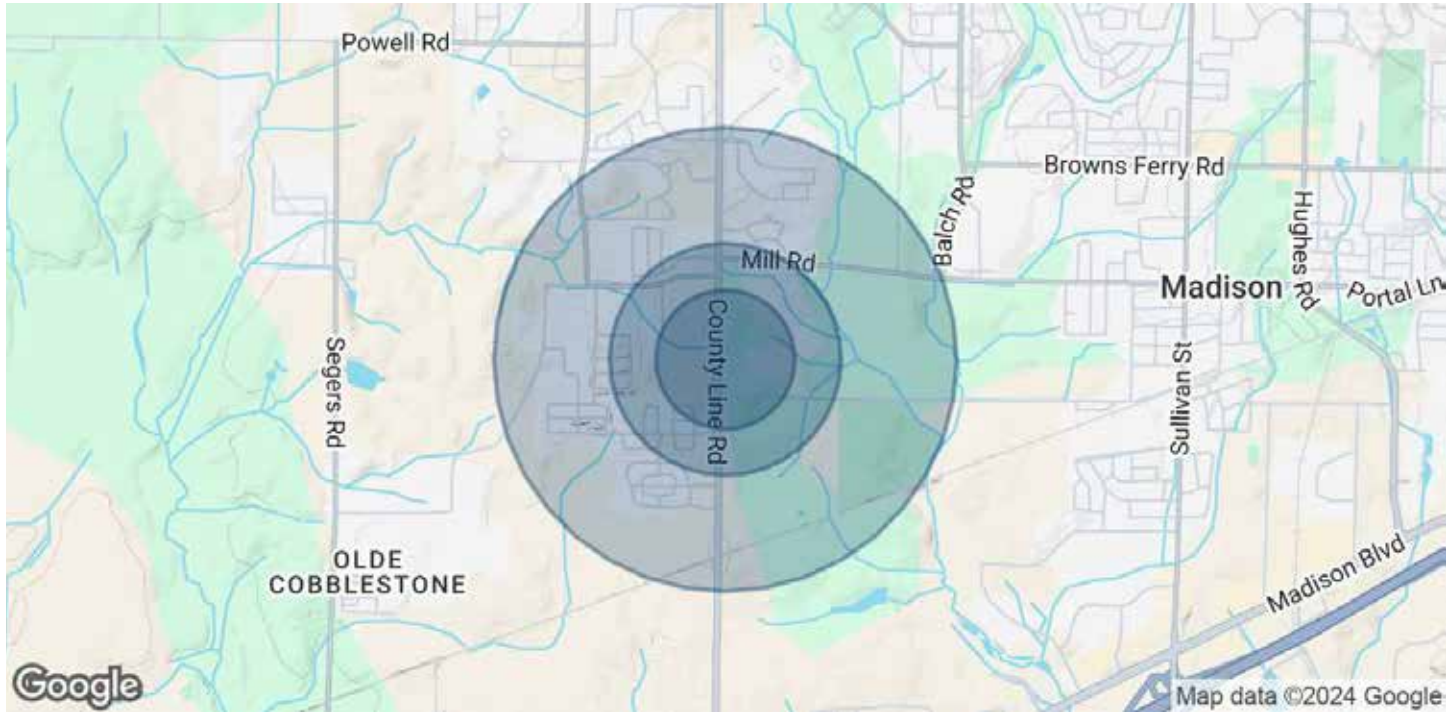


DEVELOPMENT ACREAGE

# DEMOGRAPHIC DATA

County Line Road - Madison, AL

# DEMOGRAPHICS MAP & REPORT



POPULATION	0.3 MILES	0.5 MILES	1 MILE
Total Population	4	15	72
Average Age	52	51	49
Average Age (Male)	48	48	47
Average Age (Female)	55	54	52

HOUSEHOLDS & INCOME	0.3 MILES	0.5 MILES	1 MILE
Total Households	2	7	32
# of Persons per HH	2	2.1	2.3
Average HH Income	\$67,052	\$64,140	\$58,010
Average House Value	\$194,411	\$181,903	\$156,166

Demographics data derived from AlphaMap

# Demographic and Income Profile

1452 Continental Dr, Madison, Alabama, 35758  
Ring: 1 mile radius

Prepared by Esri  
Latitude: 34.69407  
Longitude: -86.78581

Summary	Census 2010	Census 2020	2024	2029
Population	2,137	4,486	4,894	5,460
Households	737	1,545	1,647	1,815
Families	611	1,201	1,273	1,417
Average Household Size	2.90	2.89	2.96	2.99
Owner Occupied Housing Units	637	1,134	1,229	1,260
Renter Occupied Housing Units	100	411	418	555
Median Age	36.6	35.7	36.2	35.8

Trends: 2024-2029 Annual Rate	Area	State	National
Population	2.21%	0.31%	0.38%
Households	1.96%	0.50%	0.64%
Families	2.17%	0.47%	0.56%
Owner HHs	0.50%	0.58%	0.97%
Median Household Income	1.74%	3.01%	2.95%

Households by Income	2024		2029	
	Number	Percent	Number	Percent
<\$15,000	49	3.0%	45	2.5%
\$15,000 - \$24,999	46	2.8%	35	1.9%
\$25,000 - \$34,999	6	0.4%	5	0.3%
\$35,000 - \$49,999	60	3.6%	51	2.8%
\$50,000 - \$74,999	156	9.5%	141	7.8%
\$75,000 - \$99,999	173	10.5%	163	9.0%
\$100,000 - \$149,999	365	22.2%	385	21.2%
\$150,000 - \$199,999	345	20.9%	427	23.5%
\$200,000+	447	27.1%	563	31.0%

Median Household Income	\$143,870	\$156,802
Average Household Income	\$172,091	\$192,381
Per Capita Income	\$59,099	\$65,758

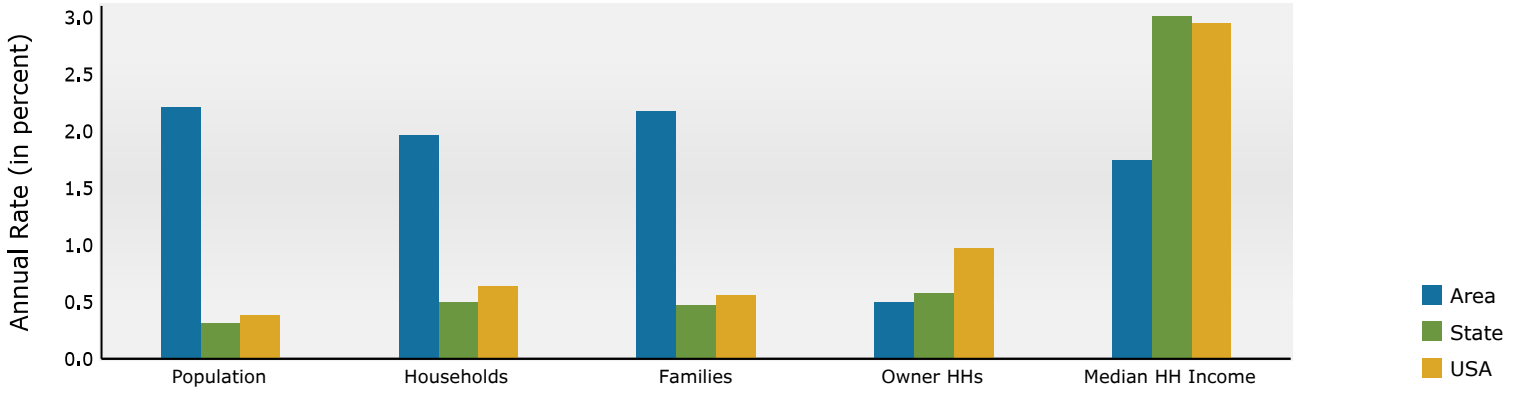
Population by Age	Census 2010		Census 2020		2024		2029	
	Number	Percent	Number	Percent	Number	Percent	Number	Percent
0 - 4	145	6.8%	289	6.4%	313	6.4%	354	6.5%
5 - 9	201	9.4%	357	8.0%	356	7.3%	364	6.7%
10 - 14	213	10.0%	421	9.4%	400	8.2%	392	7.2%
15 - 19	176	8.2%	389	8.7%	399	8.2%	377	6.9%
20 - 24	64	3.0%	231	5.1%	348	7.1%	376	6.9%
25 - 34	221	10.3%	502	11.2%	540	11.0%	814	14.9%
35 - 44	360	16.8%	713	15.9%	767	15.7%	709	13.0%
45 - 54	409	19.1%	651	14.5%	718	14.7%	779	14.3%
55 - 64	198	9.3%	498	11.1%	543	11.1%	622	11.4%
65 - 74	104	4.9%	255	5.7%	300	6.1%	414	7.6%
75 - 84	32	1.5%	133	3.0%	149	3.0%	188	3.4%
85+	15	0.7%	45	1.0%	61	1.2%	71	1.3%

Race and Ethnicity	Census 2010		Census 2020		2024		2029	
	Number	Percent	Number	Percent	Number	Percent	Number	Percent
White Alone	1,533	71.7%	2,925	65.2%	3,075	62.8%	3,309	60.6%
Black Alone	318	14.9%	626	14.0%	702	14.3%	813	14.9%
American Indian Alone	12	0.6%	28	0.6%	30	0.6%	33	0.6%
Asian Alone	216	10.1%	452	10.1%	567	11.6%	692	12.7%
Pacific Islander Alone	3	0.1%	4	0.1%	4	0.1%	6	0.1%
Some Other Race Alone	8	0.4%	71	1.6%	83	1.7%	96	1.8%
Two or More Races	49	2.3%	380	8.5%	432	8.8%	512	9.4%
Hispanic Origin (Any Race)	79	3.7%	280	6.2%	325	6.6%	387	7.1%

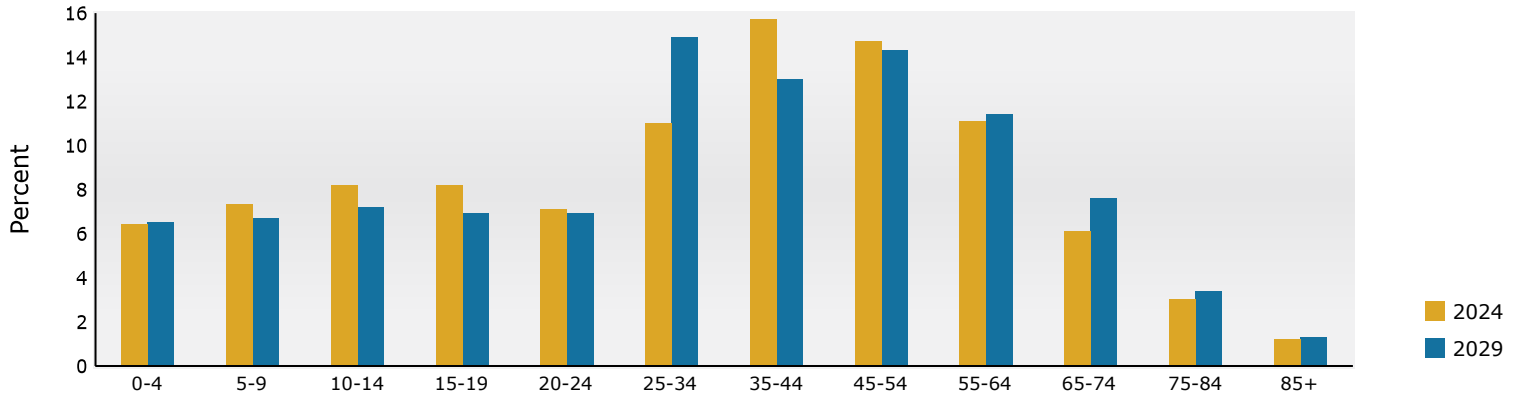
**Data Note:** Income is expressed in current dollars.

**Source:** Esri forecasts for 2024 and 2029. U.S. Census Bureau 2020 decennial Census in 2020 geographies.

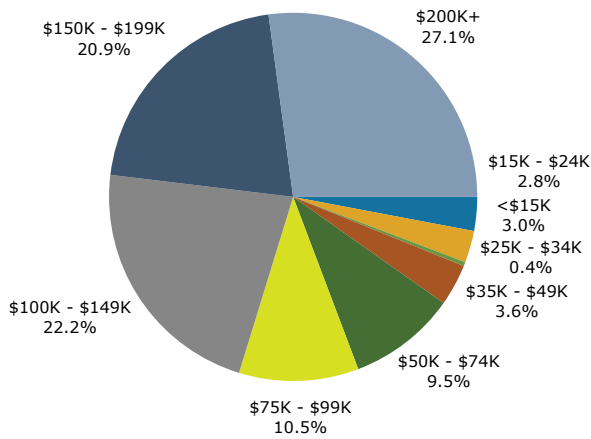
## Trends 2024-2029



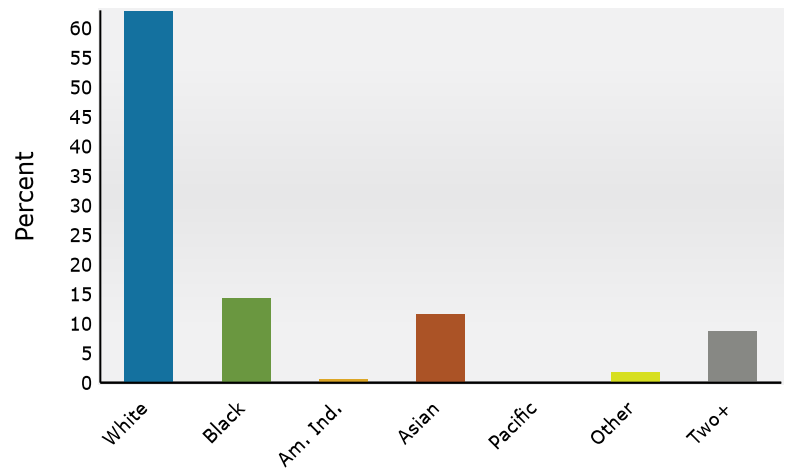
## Population by Age



## 2024 Household Income



## 2024 Population by Race



2024 Percent Hispanic Origin: 6.6%

Source: Esri forecasts for 2024 and 2029. U.S. Census Bureau 2020 decennial Census in 2020 geographies.

# Demographic and Income Profile

1452 Continental Dr, Madison, Alabama, 35758  
Ring: 3 mile radius

Prepared by Esri  
Latitude: 34.69407  
Longitude: -86.78581

Summary	Census 2010	Census 2020	2024	2029
Population	22,143	33,329	36,068	38,680
Households	8,336	11,921	12,838	13,736
Families	5,933	8,925	9,555	10,301
Average Household Size	2.65	2.79	2.80	2.81
Owner Occupied Housing Units	5,845	8,311	8,867	9,132
Renter Occupied Housing Units	2,490	3,610	3,971	4,604
Median Age	35.2	36.1	36.9	36.9

Trends: 2024-2029 Annual Rate	Area	State	National
Population	1.41%	0.31%	0.38%
Households	1.36%	0.50%	0.64%
Families	1.51%	0.47%	0.56%
Owner HHs	0.59%	0.58%	0.97%
Median Household Income	2.48%	3.01%	2.95%

Households by Income	2024		2029	
	Number	Percent	Number	Percent
<\$15,000	570	4.4%	518	3.8%
\$15,000 - \$24,999	379	3.0%	302	2.2%
\$25,000 - \$34,999	280	2.2%	240	1.7%
\$35,000 - \$49,999	1,134	8.8%	1,024	7.5%
\$50,000 - \$74,999	1,809	14.1%	1,651	12.0%
\$75,000 - \$99,999	1,265	9.9%	1,262	9.2%
\$100,000 - \$149,999	2,662	20.7%	2,808	20.4%
\$150,000 - \$199,999	2,026	15.8%	2,494	18.2%
\$200,000+	2,712	21.1%	3,437	25.0%

Median Household Income	\$113,815	\$128,663
Average Household Income	\$146,404	\$166,550
Per Capita Income	\$52,674	\$59,793

Population by Age	Census 2010		Census 2020		2024		2029	
	Number	Percent	Number	Percent	Number	Percent	Number	Percent
0 - 4	1,543	7.0%	2,097	6.3%	2,236	6.2%	2,412	6.2%
5 - 9	1,881	8.5%	2,662	8.0%	2,571	7.1%	2,487	6.4%
10 - 14	1,860	8.4%	2,922	8.8%	2,923	8.1%	2,701	7.0%
15 - 19	1,669	7.5%	2,780	8.3%	2,793	7.7%	2,697	7.0%
20 - 24	1,113	5.0%	1,769	5.3%	2,536	7.0%	2,664	6.9%
25 - 34	2,920	13.2%	3,838	11.5%	4,002	11.1%	5,515	14.3%
35 - 44	3,635	16.4%	5,104	15.3%	5,491	15.2%	4,978	12.9%
45 - 54	3,893	17.6%	4,953	14.9%	5,231	14.5%	5,413	14.0%
55 - 64	2,014	9.1%	3,921	11.8%	4,289	11.9%	4,654	12.0%
65 - 74	1,023	4.6%	2,021	6.1%	2,428	6.7%	3,200	8.3%
75 - 84	442	2.0%	961	2.9%	1,159	3.2%	1,459	3.8%
85+	150	0.7%	302	0.9%	408	1.1%	503	1.3%

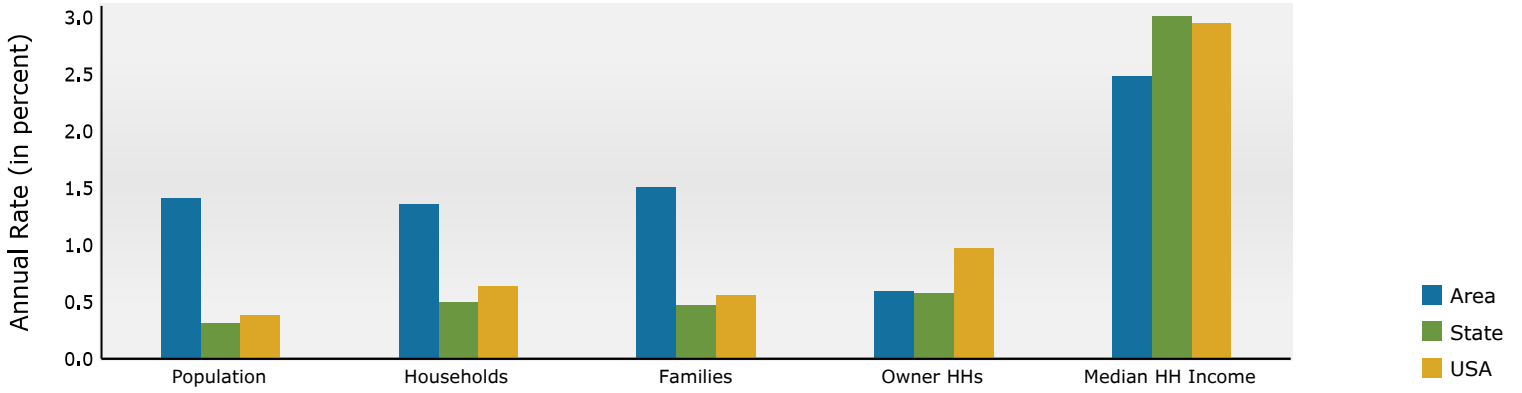
Race and Ethnicity	Census 2010		Census 2020		2024		2029	
	Number	Percent	Number	Percent	Number	Percent	Number	Percent
White Alone	15,376	69.4%	21,054	63.2%	22,193	61.5%	23,127	59.8%
Black Alone	4,037	18.2%	5,765	17.3%	6,336	17.6%	6,938	17.9%
American Indian Alone	126	0.6%	180	0.5%	187	0.5%	200	0.5%
Asian Alone	1,677	7.6%	2,810	8.4%	3,347	9.3%	3,873	10.0%
Pacific Islander Alone	16	0.1%	54	0.2%	55	0.2%	63	0.2%
Some Other Race Alone	364	1.6%	654	2.0%	750	2.1%	838	2.2%
Two or More Races	547	2.5%	2,811	8.4%	3,200	8.9%	3,641	9.4%
Hispanic Origin (Any Race)	1,086	4.9%	2,035	6.1%	2,358	6.5%	2,677	6.9%

**Data Note:** Income is expressed in current dollars.

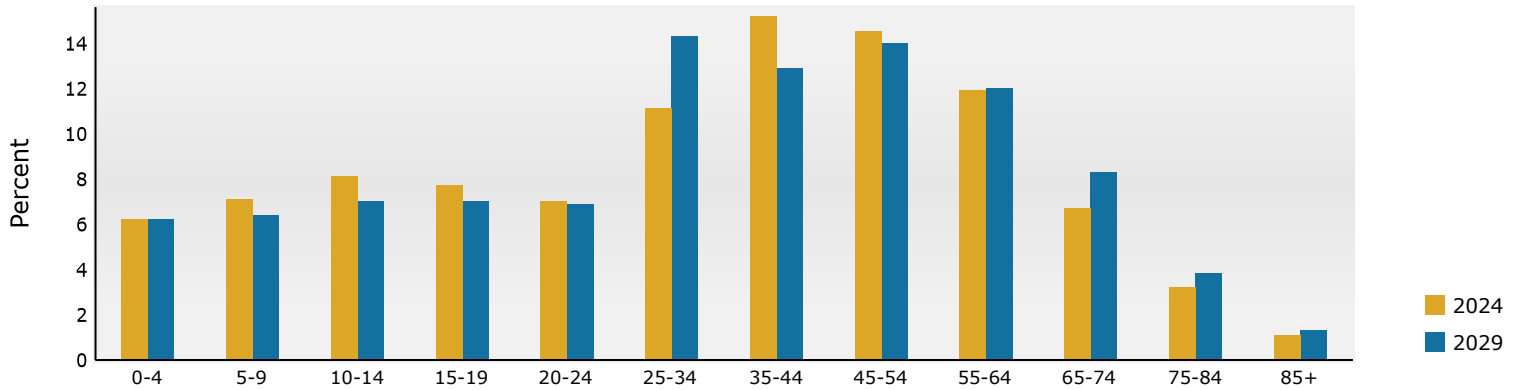
**Source:** Esri forecasts for 2024 and 2029. U.S. Census Bureau 2020 decennial Census in 2020 geographies.



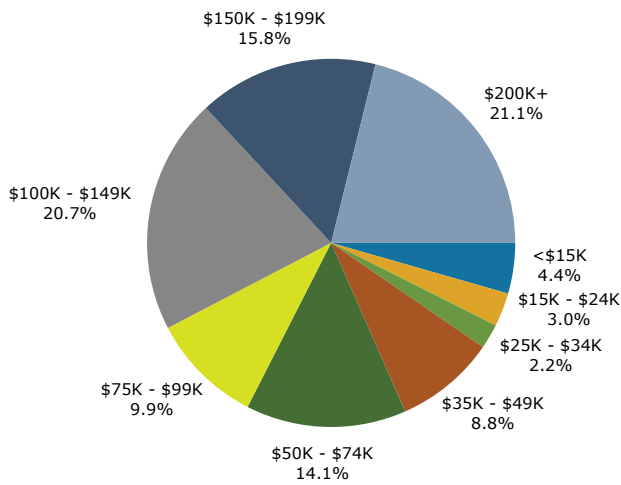
## Trends 2024-2029



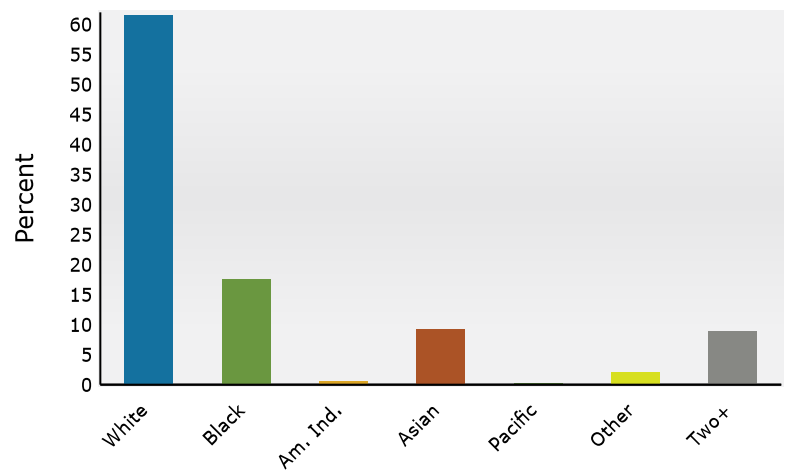
## Population by Age



## 2024 Household Income



## 2024 Population by Race



2024 Percent Hispanic Origin: 6.5%

Source: Esri forecasts for 2024 and 2029. U.S. Census Bureau 2020 decennial Census in 2020 geographies.

# Demographic and Income Profile

1452 Continental Dr, Madison, Alabama, 35758  
Ring: 5 mile radius

Prepared by Esri  
Latitude: 34.69407  
Longitude: -86.78581

Summary	Census 2010	Census 2020	2024	2029
Population	52,405	70,098	78,836	86,057
Households	20,498	26,922	30,357	33,342
Families	14,200	18,899	21,174	23,357
Average Household Size	2.55	2.59	2.59	2.57
Owner Occupied Housing Units	13,802	18,073	19,515	20,149
Renter Occupied Housing Units	6,696	8,849	10,842	13,194
Median Age	35.8	37.2	38.0	38.9

Trends: 2024-2029 Annual Rate	Area	State	National
Population	1.77%	0.31%	0.38%
Households	1.89%	0.50%	0.64%
Families	1.98%	0.47%	0.56%
Owner HHs	0.64%	0.58%	0.97%
Median Household Income	2.09%	3.01%	2.95%

Households by Income	2024		2029	
	Number	Percent	Number	Percent
<\$15,000	1,261	4.2%	1,154	3.5%
\$15,000 - \$24,999	741	2.4%	613	1.8%
\$25,000 - \$34,999	1,097	3.6%	954	2.9%
\$35,000 - \$49,999	2,348	7.7%	2,183	6.5%
\$50,000 - \$74,999	4,067	13.4%	3,858	11.6%
\$75,000 - \$99,999	3,559	11.7%	3,717	11.1%
\$100,000 - \$149,999	6,688	22.0%	7,303	21.9%
\$150,000 - \$199,999	4,464	14.7%	5,710	17.1%
\$200,000+	6,132	20.2%	7,850	23.5%

Median Household Income	\$111,365	\$123,502
Average Household Income	\$144,285	\$162,993
Per Capita Income	\$55,917	\$63,571

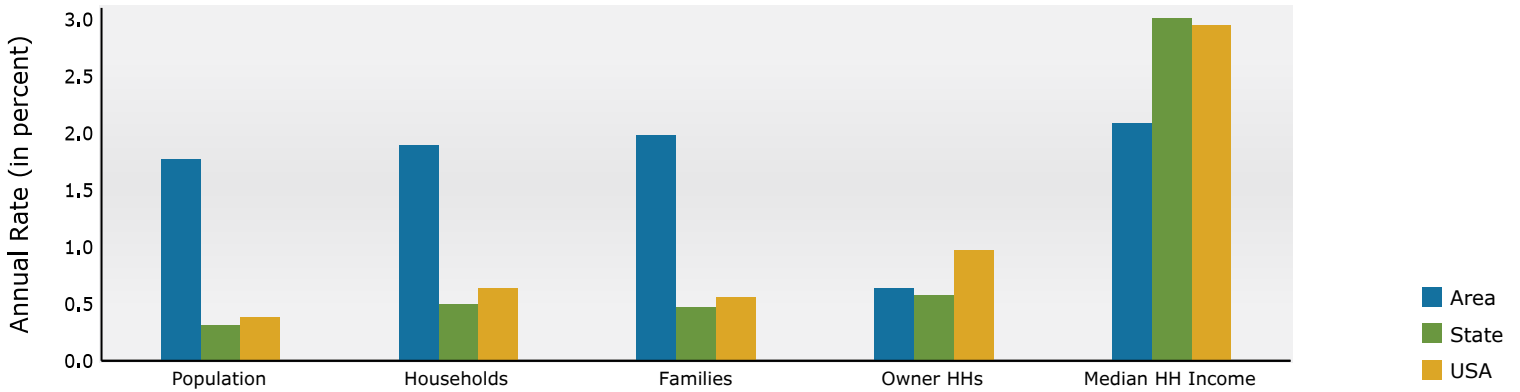
Population by Age	Census 2010		Census 2020		2024		2029	
	Number	Percent	Number	Percent	Number	Percent	Number	Percent
0 - 4	3,339	6.4%	4,027	5.7%	4,474	5.7%	4,878	5.7%
5 - 9	3,888	7.4%	4,898	7.0%	5,048	6.4%	5,062	5.9%
10 - 14	4,180	8.0%	5,308	7.6%	5,565	7.1%	5,540	6.4%
15 - 19	3,945	7.5%	5,210	7.4%	5,374	6.8%	5,431	6.3%
20 - 24	3,120	6.0%	4,286	6.1%	5,297	6.7%	5,382	6.3%
25 - 34	7,178	13.7%	9,093	13.0%	10,233	13.0%	12,049	14.0%
35 - 44	7,779	14.8%	9,713	13.9%	11,426	14.5%	11,997	13.9%
45 - 54	9,458	18.0%	9,899	14.1%	10,685	13.6%	11,421	13.3%
55 - 64	5,399	10.3%	9,468	13.5%	10,200	12.9%	10,628	12.3%
65 - 74	2,631	5.0%	5,101	7.3%	6,499	8.2%	8,295	9.6%
75 - 84	1,137	2.2%	2,301	3.3%	2,999	3.8%	4,075	4.7%
85+	352	0.7%	794	1.1%	1,034	1.3%	1,300	1.5%

Race and Ethnicity	Census 2010		Census 2020		2024		2029	
	Number	Percent	Number	Percent	Number	Percent	Number	Percent
White Alone	37,912	72.3%	45,505	64.9%	49,913	63.3%	53,015	61.6%
Black Alone	8,736	16.7%	12,116	17.3%	14,091	17.9%	15,799	18.4%
American Indian Alone	275	0.5%	344	0.5%	375	0.5%	403	0.5%
Asian Alone	3,397	6.5%	4,956	7.1%	5,929	7.5%	6,966	8.1%
Pacific Islander Alone	53	0.1%	106	0.2%	115	0.1%	135	0.2%
Some Other Race Alone	681	1.3%	1,366	1.9%	1,663	2.1%	1,926	2.2%
Two or More Races	1,350	2.6%	5,706	8.1%	6,750	8.6%	7,813	9.1%
Hispanic Origin (Any Race)	2,232	4.3%	4,086	5.8%	4,986	6.3%	5,799	6.7%

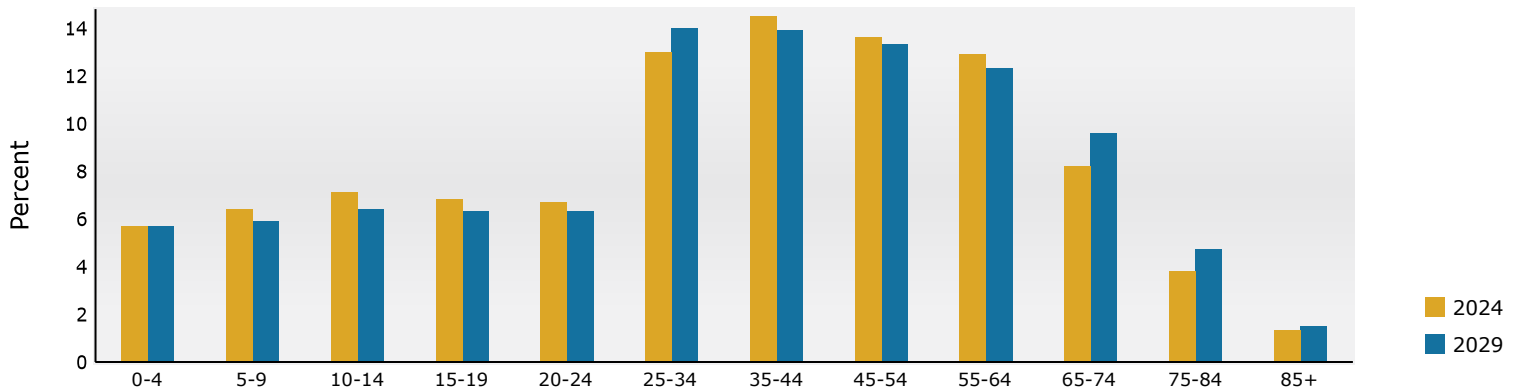
**Data Note:** Income is expressed in current dollars.

**Source:** Esri forecasts for 2024 and 2029. U.S. Census Bureau 2020 decennial Census in 2020 geographies.

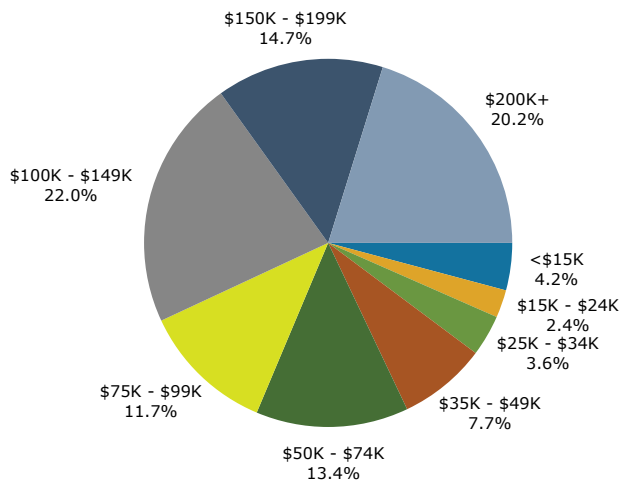
## Trends 2024-2029



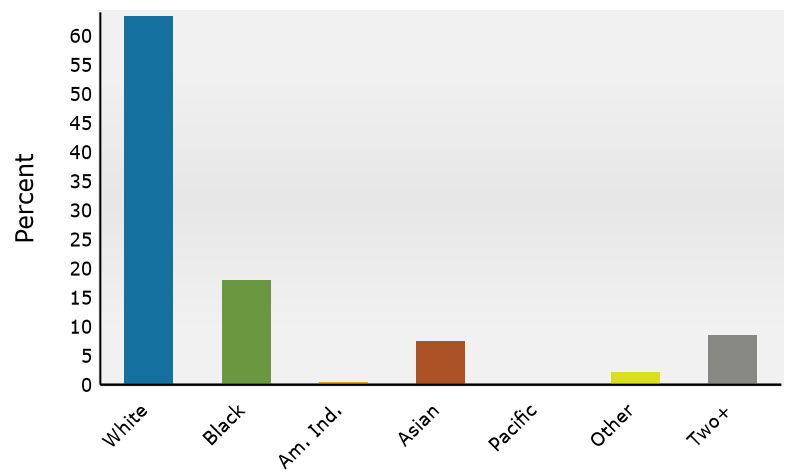
## Population by Age



## 2024 Household Income



## 2024 Population by Race



2024 Percent Hispanic Origin: 6.3%

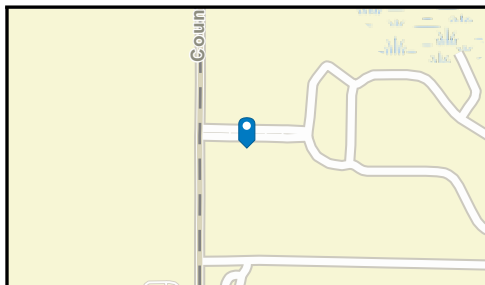
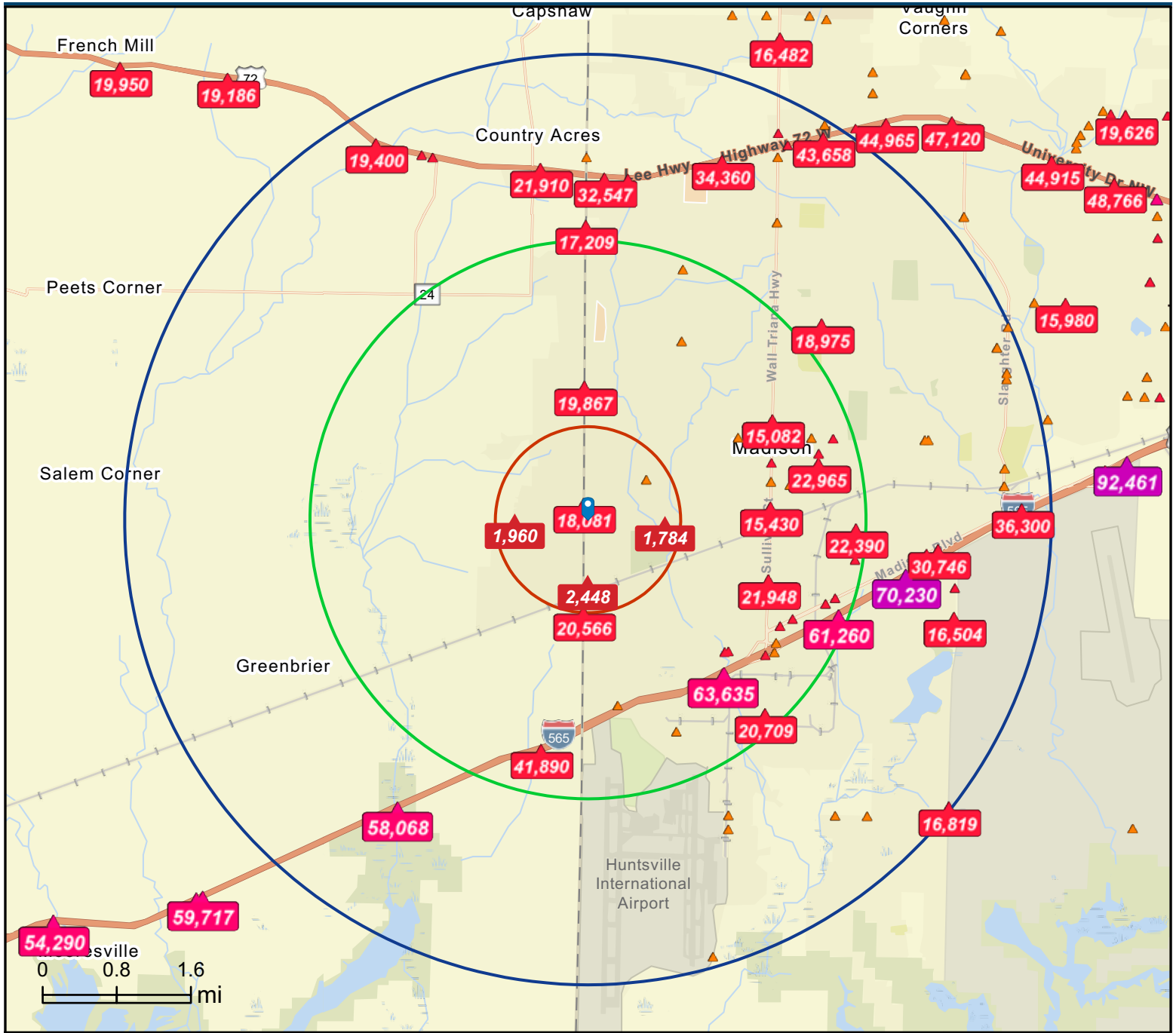
Source: Esri forecasts for 2024 and 2029. U.S. Census Bureau 2020 decennial Census in 2020 geographies.



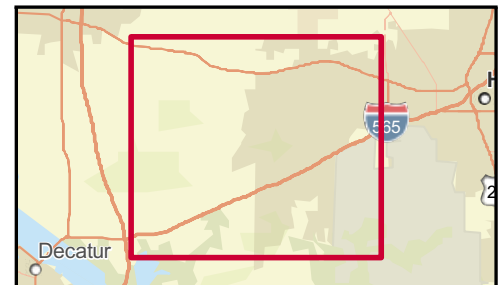
DEVELOPMENT ACREAGE

# TRAFFIC DATA

County Line Road - Madison, AL



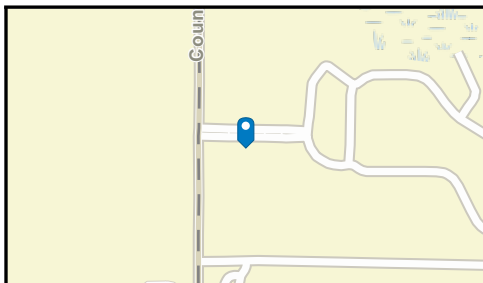
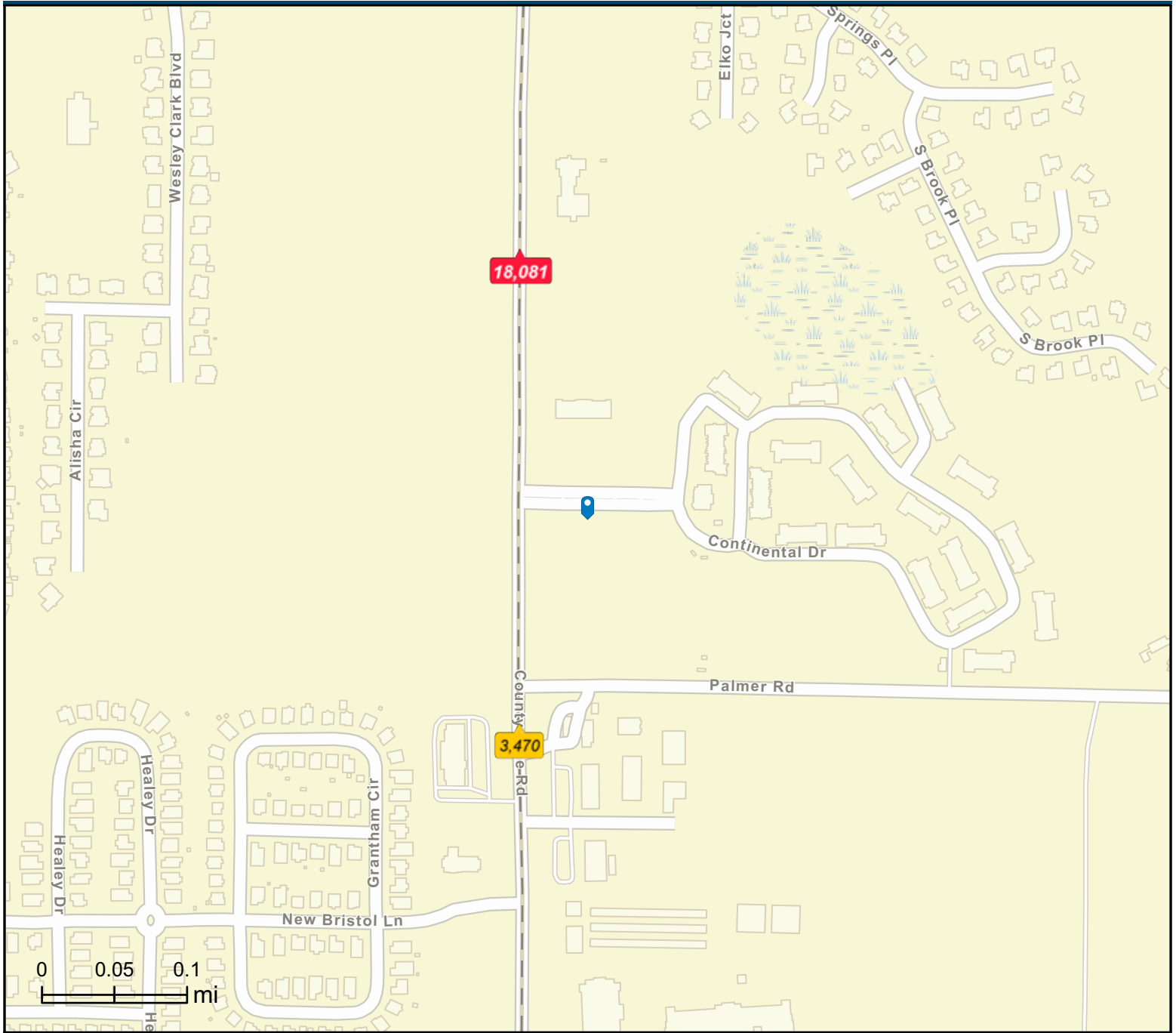
- Average Daily Traffic Volume**
- ▲ Up to 6,000 vehicles per day
  - ▲ 6,001 - 15,000
  - ▲ 15,001 - 30,000
  - ▲ 30,001 - 50,000
  - ▲ 50,001 - 100,000
  - ▲ More than 100,000 per day



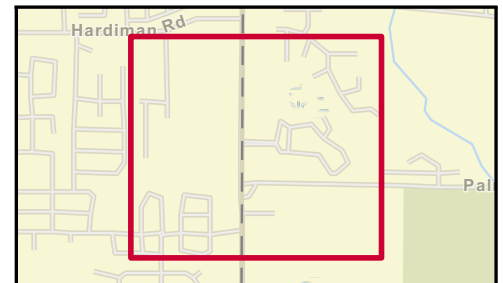
# Traffic Count Map - Close Up

1452 Continental Dr, Madison, Alabama, 35758  
Rings: 1, 3, 5 mile radii

Prepared by Esri  
Latitude: 34.69407  
Longitude: -86.78581



- Average Daily Traffic Volume**
- ▲ Up to 6,000 vehicles per day
  - ▲ 6,001 - 15,000
  - ▲ 15,001 - 30,000
  - ▲ 30,001 - 50,000
  - ▲ 50,001 - 100,000
  - ▲ More than 100,000 per day



Source: ©2024 Kalibrate Technologies (Q3 2024).



**GATEWAY**  
COMMERCIAL BROKERAGE

300 Market St NE, Suite 3 | Decatur, AL 35601 | [GATEWAYCOMMERCIAL.COM](http://GATEWAYCOMMERCIAL.COM)