



MEDICAL ARTS SPECIALTY CENTER

1304 13TH AVENUE, DECATUR, AL 35601

PRESENTED BY

EMMETTE BARRAN, CCIM

ebarran@gatewaycommercial.net | 256.303.1703



OFFICE BUILDING FOR LEASE

1304 13TH AVENUE DECATUR, AL 35601



PROPERTY OVERVIEW

The Medical Arts Specialty Center consists of three buildings of approximately 30,313 sf. This property sits on approximately 2.7869 acres of land. The buildings have an interior courtyard area that is covered.

LEASE FEATURES

Lease Rate:	\$18.00 SF/month (NNN)
Available SF:	2,300 SF
Property Type	Medical Office
Utilities:	All public utilities are available to the property, and include water, sewer, electrical, natural gas and telephone service.
Zoning:	M-C

For More Information, Please Contact:

EMMETTE BARRAN, CCIM

256.303.1703

Qualifying Broker

ebarran@gatewaycommercial.net

GATEWAY COMMERCIAL BROKERAGE, INC.

300 Market St NE, Suite 3, Decatur, AL 35601

256.355.0721

www.gatewaycommercial.com

The information contained herein is derived from sources deemed reliable. Gateway Commercial Brokerage assumes no liability for errors or omissions. Offering is subject to change or be withdrawn without notice.

ADDITIONAL PHOTOS

1304 13TH AVENUE DECATUR, AL 35601



For More Information, Please Contact:

EMMETTE BARRAN, CCIM

256.303.1703

Qualifying Broker

ebarran@gatewaycommercial.net

GATEWAY COMMERCIAL BROKERAGE, INC.

300 Market St NE, Suite 3, Decatur, AL 35601

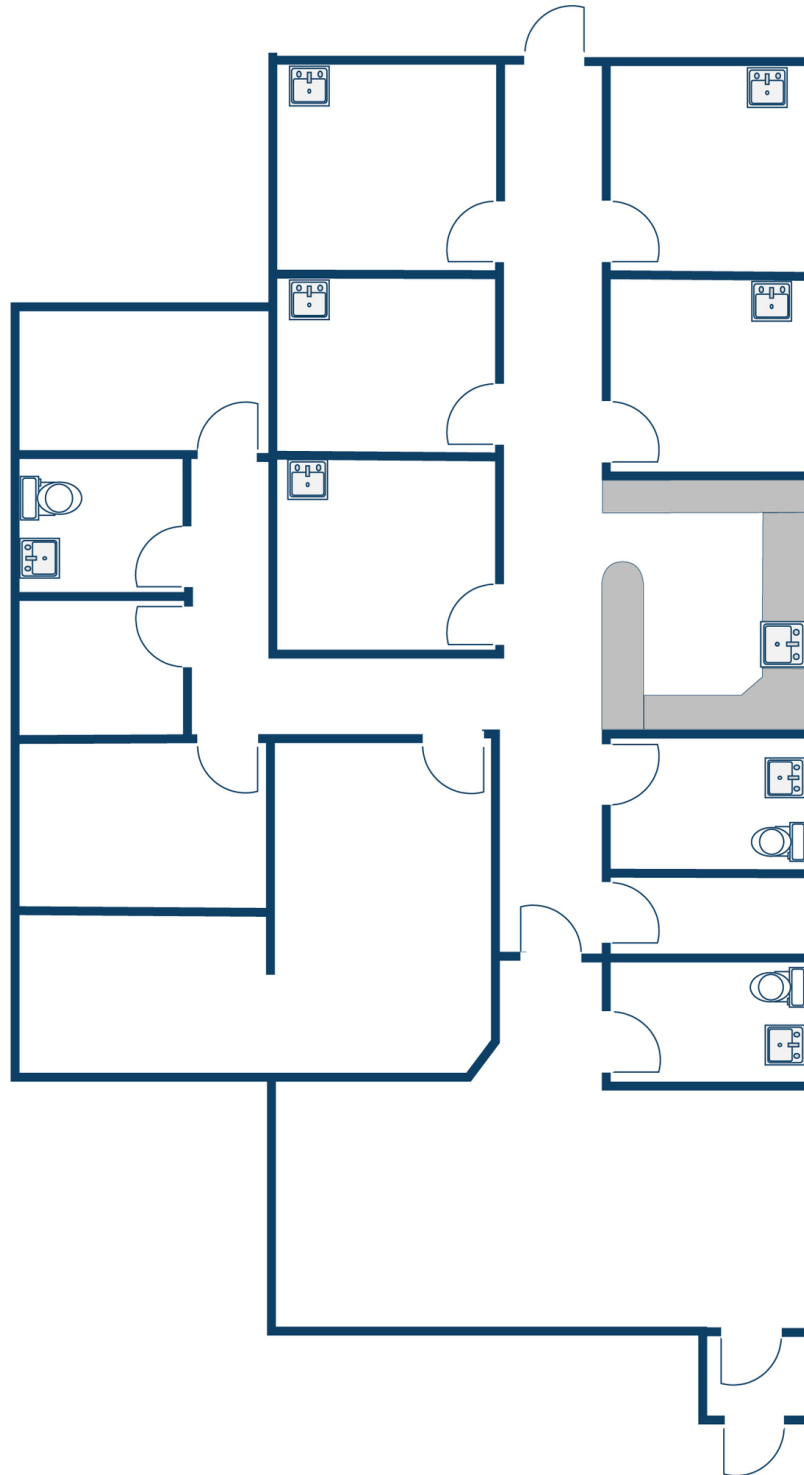
256.355.0721

www.gatewaycommercial.com

The information contained herein is derived from sources deemed reliable. Gateway Commercial Brokerage assumes no liability for errors or omissions. Offering is subject to change or be withdrawn without notice.

FLOOR PLAN - UNIT C

1304 13TH AVENUE DECATUR, AL 35601



For More Information, Please Contact:

EMMETTE BARRAN, CCIM

256.303.1703

Qualifying Broker

ebarran@gatewaycommercial.net

GATEWAY COMMERCIAL BROKERAGE, INC.

300 Market St NE, Suite 3, Decatur, AL 35601

256.355.0721

www.gatewaycommercial.com

The information contained herein is derived from sources deemed reliable. Gateway Commercial Brokerage assumes no liability for errors or omissions. Offering is subject to change or be withdrawn without notice.