

**PRIME CORNER  
COUNTY LINE RD  
MADISON, ALABAMA**

**+/- 2.69 ACRES**

**COMMERCIAL LAND FOR SALE**



**GATEWAY**  
COMMERCIAL BROKERAGE



For More Information, Please Contact:

**Greg Tanksley**  
(256) 303-9683  
Salesperson  
[gltank@bellsouth.net](mailto:gltank@bellsouth.net)

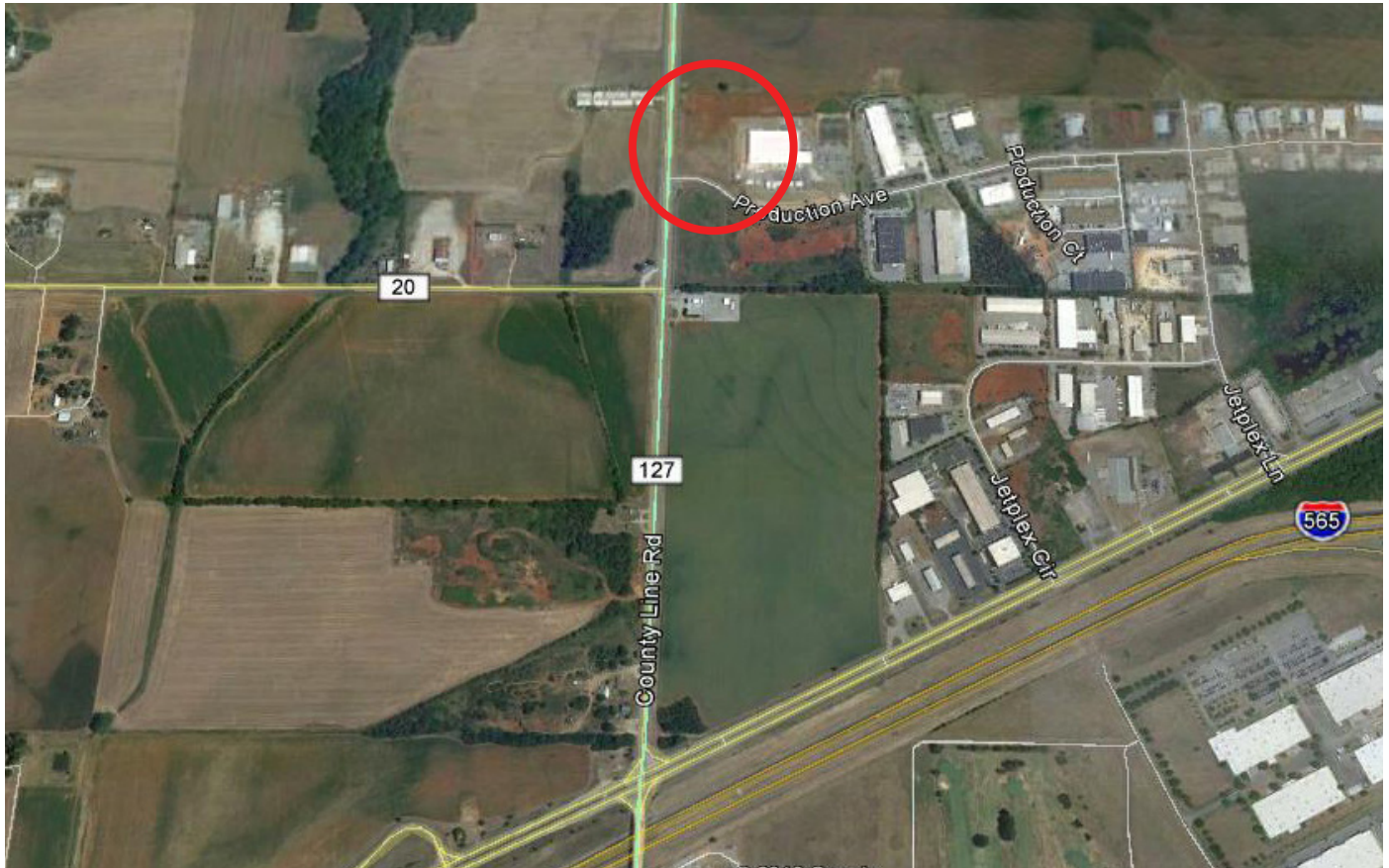
**GATEWAY COMMERCIAL BROKERAGE, INC.**  
300 Market Street, Suite 3  
(256) 355-0721  
Decatur, AL 35601  
[www.gatewaycommercial.com](http://www.gatewaycommercial.com)

Details contained, herein, are from sources we deem reliable. However, no liability is assumed for errors or omissions. This offering is subject to change or be withdrawn without notice. All tax, legal, or financial matters, herein, should be reviewed by competent professionals.

# PRIME CORNER: COUNTY LINE RD/PRODUCTION AVE

LAND  
FOR SALE

+/- 2.69 ACRES COMMERCIAL LAND



## PROPERTY OVERVIEW

The property is located on the northeast corner of County Line Road and Production Avenue. There are +/- 310 feet of frontage on County Line with traffic counts of 24,297 per day. County Line Rd expanded to five lanes.

Approximately 2.2 miles from the future \$1.6 billion Toyota/Mazda plant currently under construction.

Located in close proximity to Polaris Plant, James Clemens High School, Huntsville International Airport and 0.7 miles from interchange at I-565 and County Line Road. The property is offered for sale or ground lease.

SITE FEATURES	
LAND SIZE	2.69 acres
UTILITIES	All utilities available
ZONE	B-3
SALE PRICE	\$1,755,345

For More Information, Please Contact:

**Greg Tanksley**  
(256) 303-9683  
Salesperson  
[gltank@bellsouth.net](mailto:gltank@bellsouth.net)

**GATEWAY COMMERCIAL BROKERAGE, INC.**  
300 Market Street, Suite 3  
(256) 355-0721  
Decatur, AL 35601  
[www.gatewaycommercial.com](http://www.gatewaycommercial.com)

Details contained, herein, are from sources we deem reliable. However, no liability is assumed for errors or omissions. This offering is subject to change or be withdrawn without notice. All tax, legal, or financial matters, herein, should be reviewed by competent professionals.